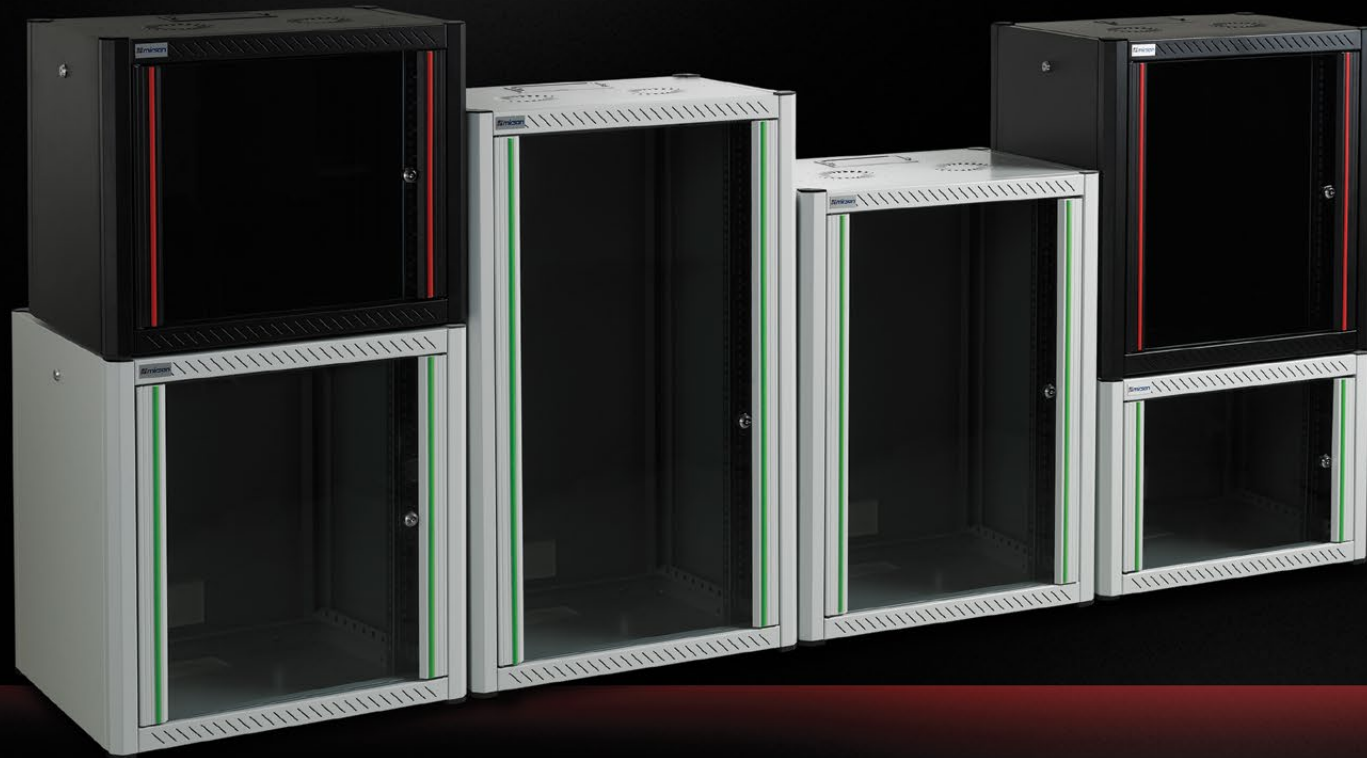


WT SERIES NETWORK WALL TYPE CABINET



WT Series NETWORK Wall Type Cabinets are designed for small or medium sized network installation requirements.

All types of 19" equipments of all trademarks and models are readily housed by keeping them in connection with each other, within said professional, wall type network cabinets. Thanks to its mountable structure to the wall, it may be easily used in cases where space is limited.

AESTHETIC VIEW

It presents an aesthetic view by means of its robust appearance, aluminum frame, and elegant and decorative structure of its front glass door. It adds value to the ambient in which it is installed by its appearance and application.

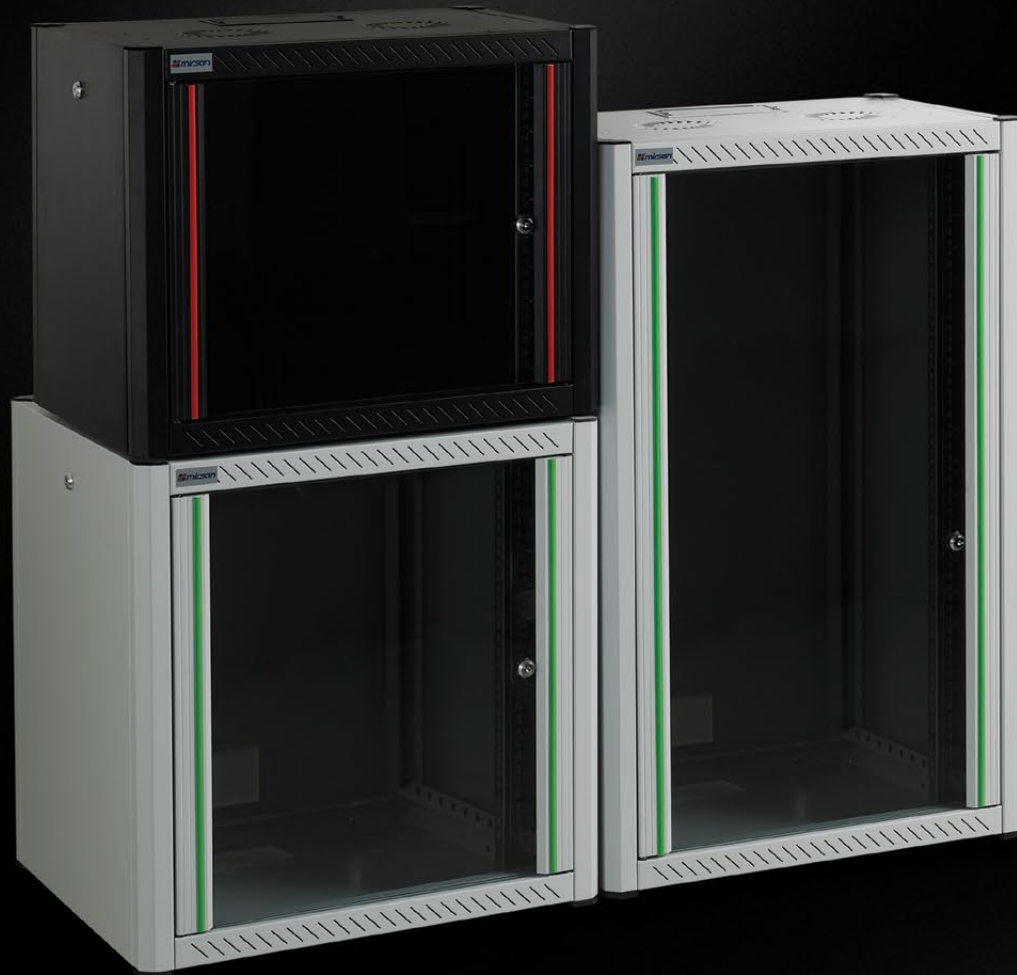
DURABLE PROFILES

Main carcass profiles clinched at the upper and lower chassis of the steel construction of the cabinet adds maximum soundness and resistance.



MOUNTED DISPATCH

WT Series NETWORK wall cabinets are delivered mounted, as one-piece and pursuing safety of the transportation.



| STANDARDS AND COMPLIANCES | |
|---------------------------|----------------------------|
| ISO 9001:2008 | Quality Management System |
| IEC 297-1 | 19" mounting standard |
| IEC 297-2 | Overall cabinet dimensions |
| TS EN 61587-1 | Standard |
| Environment Friendly | |
| %100 | recyclable. |
| CE | RoHS |
| TS | SE |

DIVERSE OPTIONS OF DEPTH AND HEIGHT

It offers 10 different size options in total with two different depth dimensions (450mm-560mm) and 5 different U heights (7U-9U-12U-16U-20U). It provides solutions in optimum volume and cost, meeting all such needs.

SAFE CONSTRUCTION

All of the front and side door options own barrel locking system.

ADJUSTABLE DEPTH

Standard cabinet is delivered having 1 set and 2 device installation rails mounted thereon. Device installation rails enable the depth adjustments of the devices to be applied into the cabinet.

U BRANDING

U branding is performed on the device installation rails of the cabinet, by automatic serigraphy machine.

U branding helps indexing of the devices housed in the cabinet as well as facilitates installation thereof.

ADDITIONALITY

In cases where devices with 4 points connections or racks with 4 points connections are to be used inside the cabinet, an additional 1 set device installation rail may be ordered and installed in addition to the standard 2 device installation rails.



ACTIVE/PASSIVE VENTILATION

By attaching ventilation module with 2 fans maximum to the ventilation hole at the upper chassis of the cabinet, **active ventilation** is achieved.

If no fan module is attached these ventilation holes enable air circulation inside the cabinet and discharging of the hot air by **passive ventilation**.

MULTI DIRECTIONAL CABLE INLET

By means of 145mm x 70mm cable inlet holes at the upper, lower and rear door of the cabinet, it provides cable inlet at **3 directions** which in turn facilitates installation.

SAFE CABLE INLET

Thanks to the **rubber edged** cable entry module, movable for 0-50 mm and with sliding compression system incoming cables are compressed safely whereas dust is reduced inside at maximum levels.

DISPLACEABLE HOLE MODULES

Standard cabinet is delivered with 1 rubber edged cable entry module for cable inlet and 2 PVC doors, installed thereon.

PVC lids and rubber edged cable entry module may be easily displaced and attached to the desired hole, according to the cable inlet direction.

MULTI DIRECTIONAL ACCESSABILITY

Enabling 3 directional access at wall type applications, 4 directional access at free standing applications, 4 directional access at wall type with attached body applications, it facilitates installation and maintenance.

AVAILABLE STOCKS ALL THE TIME

As standard white cabinets are produced in a continuous flow system, they are readily present in adequate amounts at **stocks**.

Door and color options are manufactured upon demand and delivered afterwards.

GROUND CONTACT

Bottom corners of the cabinet bear 4 **PVC feet modules** of 10mm height.

By means of these PVC feet modules, narrow and short free standing cabinets are available for use on the ground or below tables.

If required, free standing applications may be used with a caster group provided optionally.

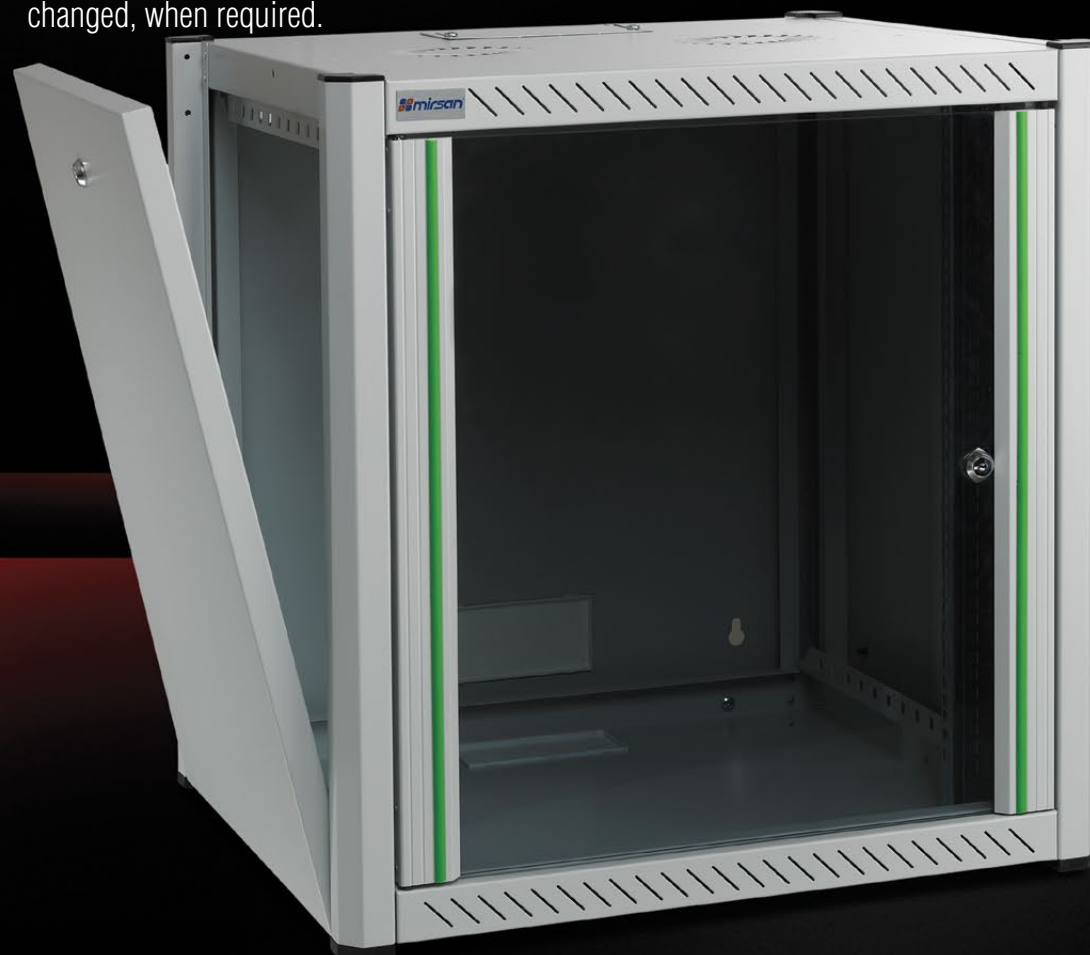
FRONT DOOR MODEL

Front door model for standard Wall Type cabinets is **full length glass door** model with aluminum extrusion frame.

Glass front door with a barrel locking mechanism is 4mm, tempered, smoothed, antistatic, smoke-colored and has high resistance against fractures.

It presents a decorative and aesthetic view with its extruded aluminum frame and colored glass strips.

Front glass door with **spring Loaded hinge system** provides ease of use and installation by being detached and reinstalled without use of any tool and opening direction of which may be easily changed, when required.



SIDE DOOR MODEL

Standard door model for the WALL type cabinets are detachable, metal models.

Easily detachable side doors have **barrel locking** system.



REAR DOOR MODEL

Rear door model for standard Wall Type cabinets is of **bracket type**.

As the bracket type rear door model is used as the **installation carcass for wall mounting** applications, it may be easily fixed to the wall.

After fixing the rear door to the wall, cabinet is fixed to the wall by being hooked onto the rear door.

Bracket type rear door has a mechanically lockable structure by being fixed to the lower chassis by means of a screw via 2 installation holes found at the top and bottom.

COMFORTABLE AND EASY INSTALLATION

Thanks to the bracket type rear door features, inner installation of the cabinets may be performed mostly on the ground or in other available spaces **providing comfort**.

Cabinet may be mounted to the wall following the inner installation performed on the ground.

HIGH ALTITUDES, LOW RISK

The fact that the cabinet is mounted onto the wall following an installation on the ground prevents potential work accidents otherwise happening at high altitudes and thereby **minimizes the risk** and effort and **maximizes efficiency**.

WTN 600 x 450 WALL TYPE CABINET

WIDTH W: 600mm

DEPTH D: 450mm



COLOR OPTIONS



RAL 7035 LIGHT GREY



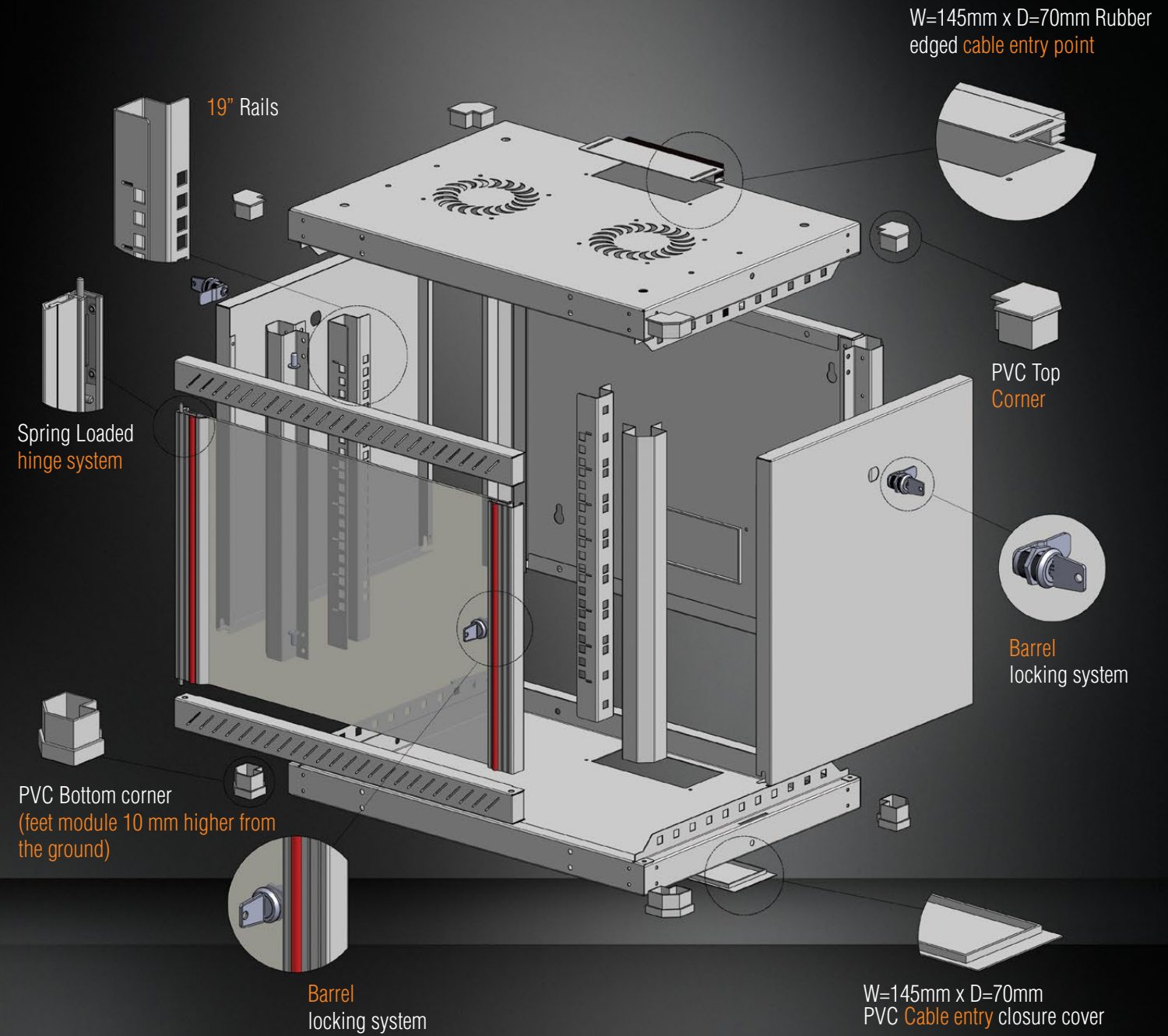
RAL 9005 BLACK

LOADING CAPACITY : 80kg

EXPLODED VIEW

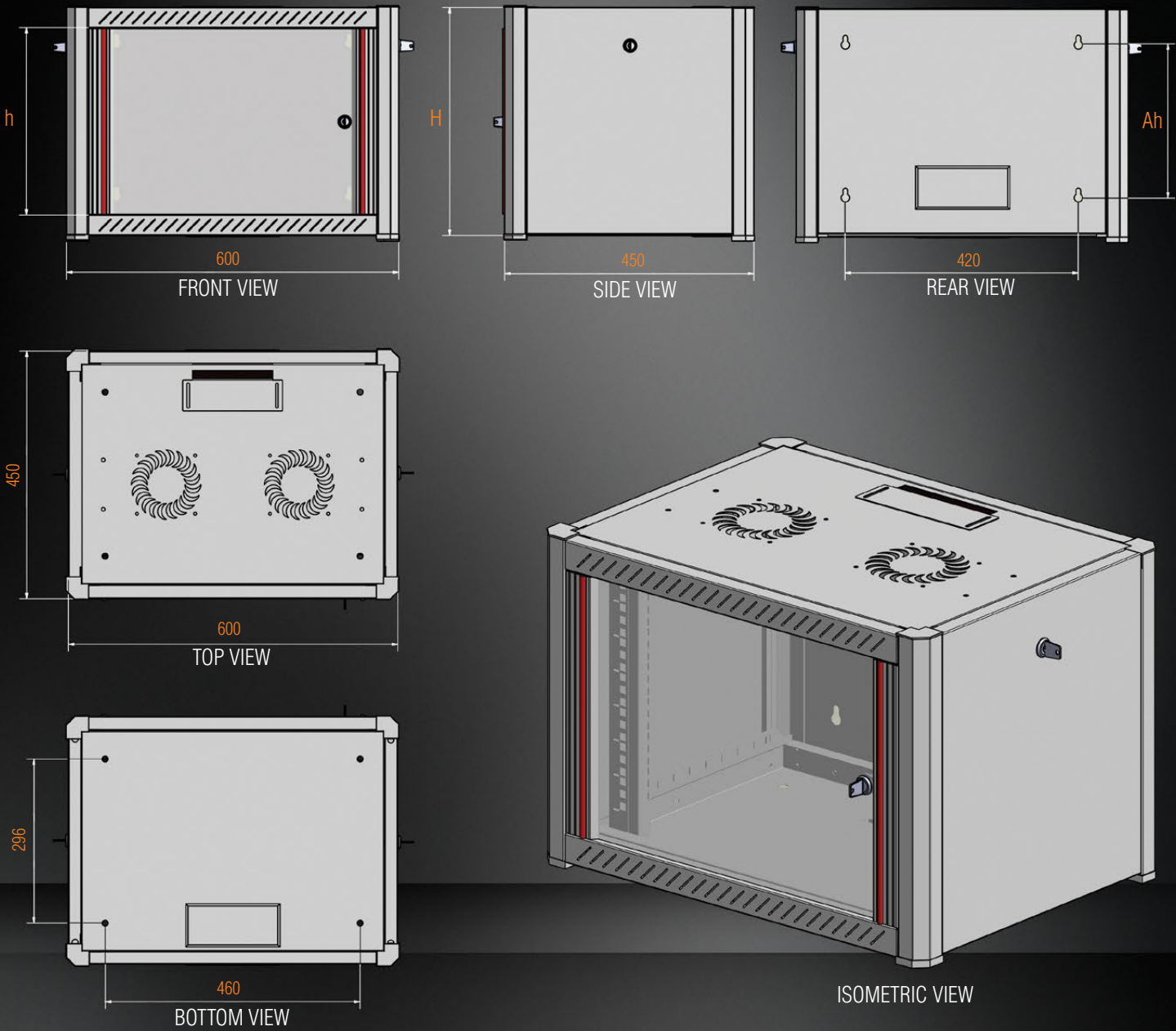
WIDTH W: 600mm

DEPTH D: 450mm



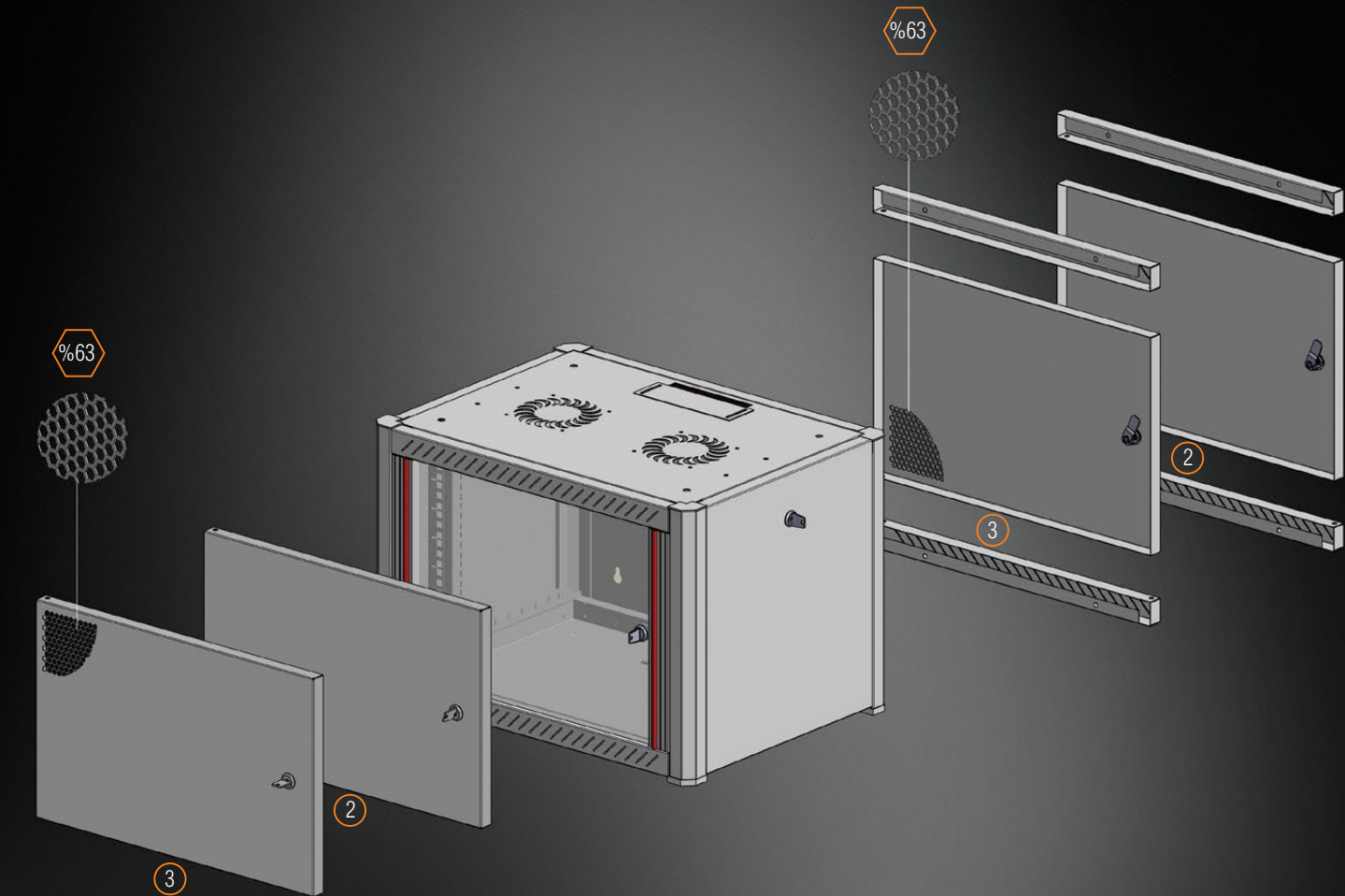
CONSTRUCTION DRAWINGS

WIDTH W: 600mm
DEPTH D: 450mm



DOOR OPTIONS

WIDTH W: 600mm
DEPTH D: 450mm



WT SERIES NETWORK WALL TYPE CABINETS W=600mm D=450mm

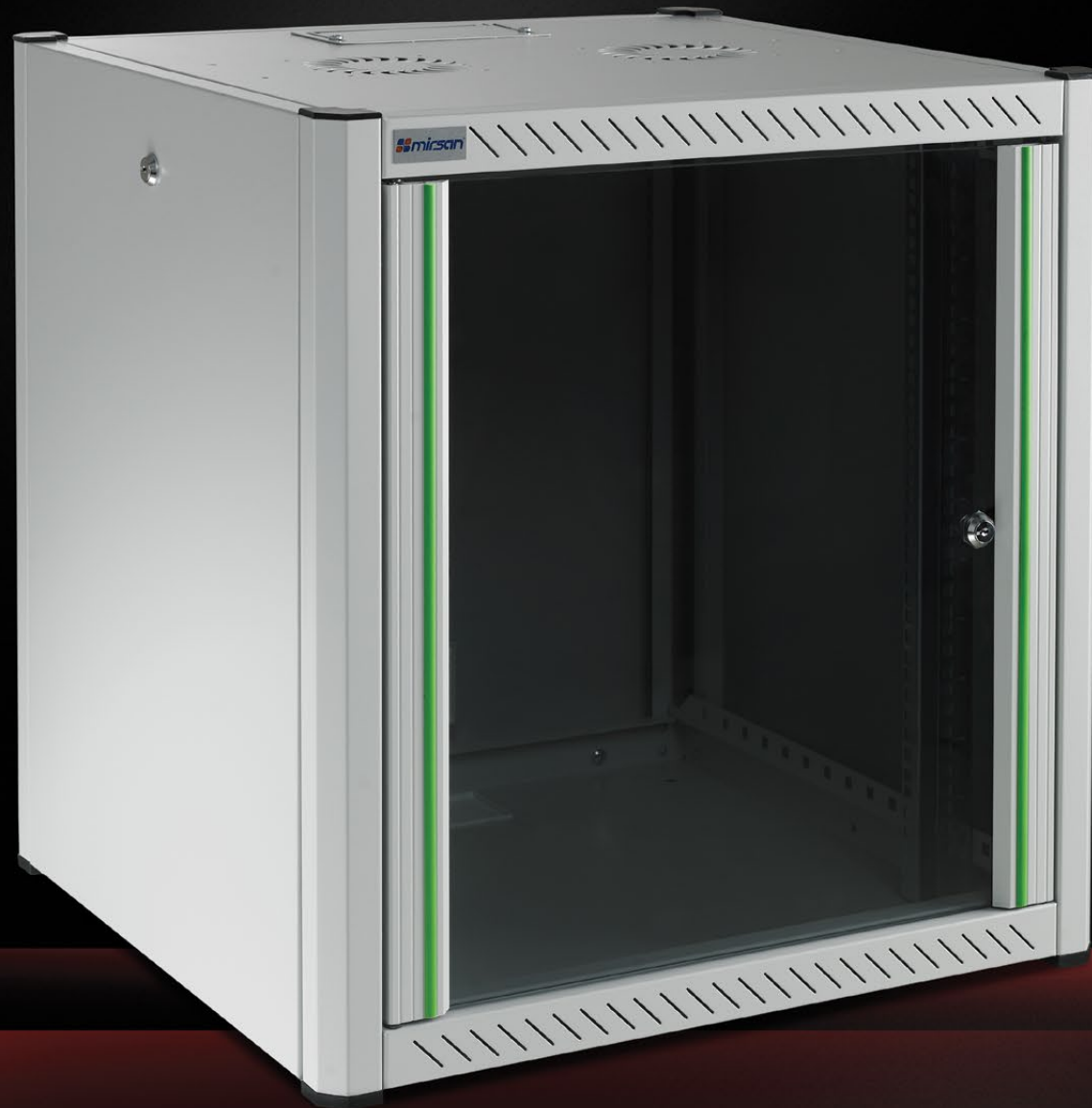
| Product Code | Product Description | in Measurement (U) | Product Dimensions WxDxH (mm) | Width: Between Rails | Ah Wall Mounting Hole Gaps (mm) | in Measurement (mm) | Package Dimensions WxDxH (mm) | Number in the Package (pcs) | Product Net Weight (kg) | Product Gross Weight (kg) | Number on Pallet (pcs) | Pallet Dimensions WxDxH (mm) | Pallet Weight (kg) | DEPTH: Between rail and rear panel (mm) |
|----------------|-----------------------------|--------------------|-------------------------------|----------------------|---------------------------------|---------------------|-------------------------------|-----------------------------|-------------------------|---------------------------|------------------------|------------------------------|--------------------|---|
| MR.WTN07U45.XX | 7U W=600mm D=450mm NETWORK | 7U | 600x450x423 | 19" | 276 | 343 | 620x470x450 | 1 | 17 | 18,4 | 20 | 1100x1300x2400 | 390 | 355 |
| MR.WTN09U45.XX | 9U W=600mm D=450mm NETWORK | 9U | 600x450x512 | 19" | 365 | 432 | 620x470x540 | 1 | 19 | 20,3 | 16 | 1100x1300x2280 | 347 | 355 |
| MR.WTN12U45.XX | 12U W=600mm D=450mm NETWORK | 12U | 600x450x645 | 19" | 498 | 565 | 620x470x670 | 1 | 23 | 24 | 12 | 1100x1300x2150 | 310 | 355 |
| MR.WTN16U45.XX | 16U W=600mm D=450mm NETWORK | 16U | 600x450x823 | 19" | 676 | 743 | 620x470x850 | 1 | 27 | 29 | 10 | 1100x1300x2450 | 312 | 355 |
| MR.WTN20U45.XX | 20U W=600mm D=450mm NETWORK | 20U | 600x450x1000 | 19" | 856 | 920 | 620x470x1030 | 1 | 32 | 33,3 | 8 | 1100x1300x2250 | 288 | 355 |

XX= Color Code, 02 means Light Grey RAL 7035 and 01 means Black RAL 9005, the code is added by the customer at the order. When one of the door options is selected, it should be informed at the order with its selected surface. The standard door options: Front Door=1 (Glass Door), Rear Door=1 (Bracket Type Door).

WTN 600 x 560 WALL TYPE CABINET

WIDTH W: 600mm

DEPTH D: 560mm



COLOR OPTIONS

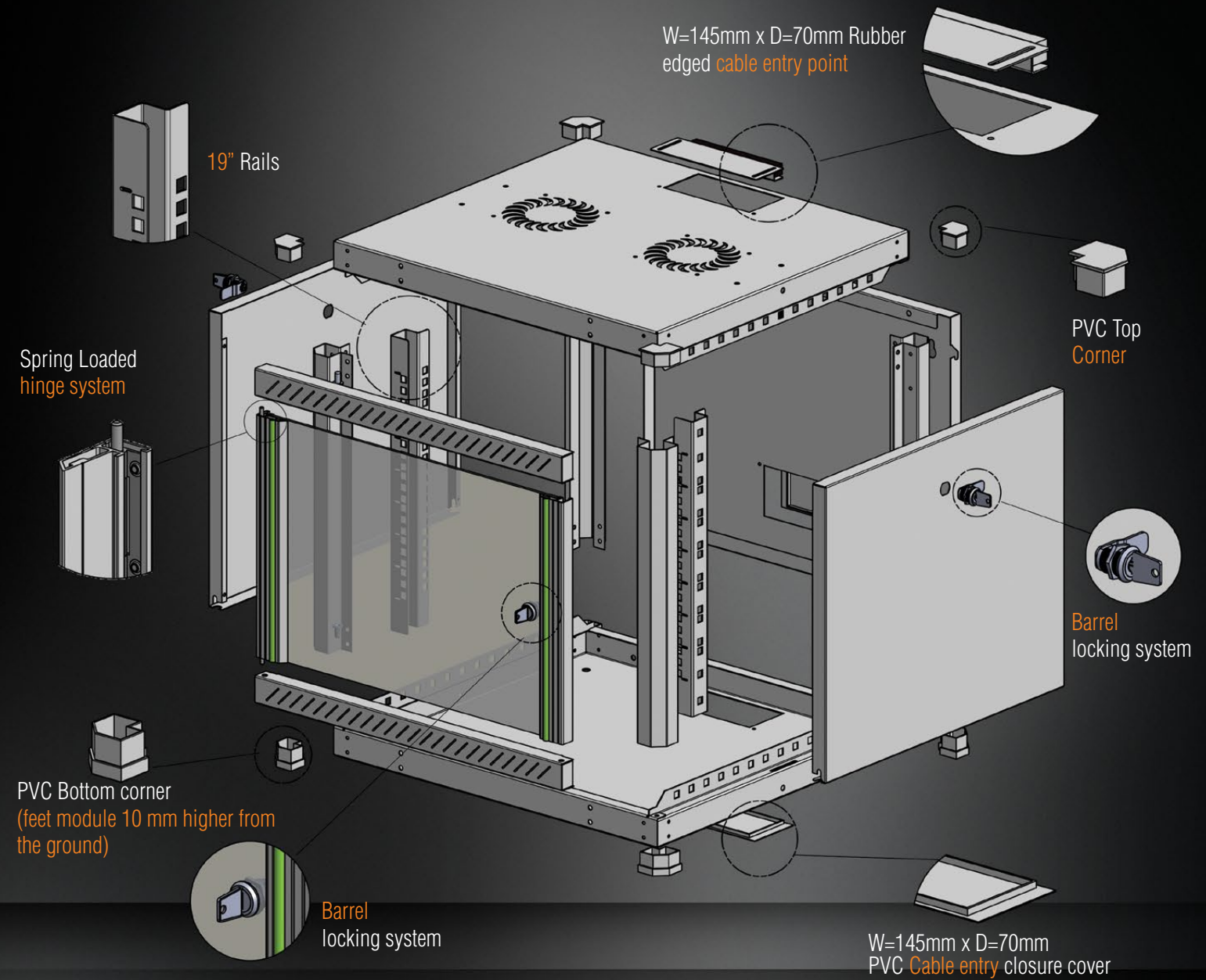


LOADING CAPACITY : 80kg

EXPLODED VIEW

WIDTH W: 600mm

DEPTH D: 560mm



CONSTRUCTION DRAWINGS

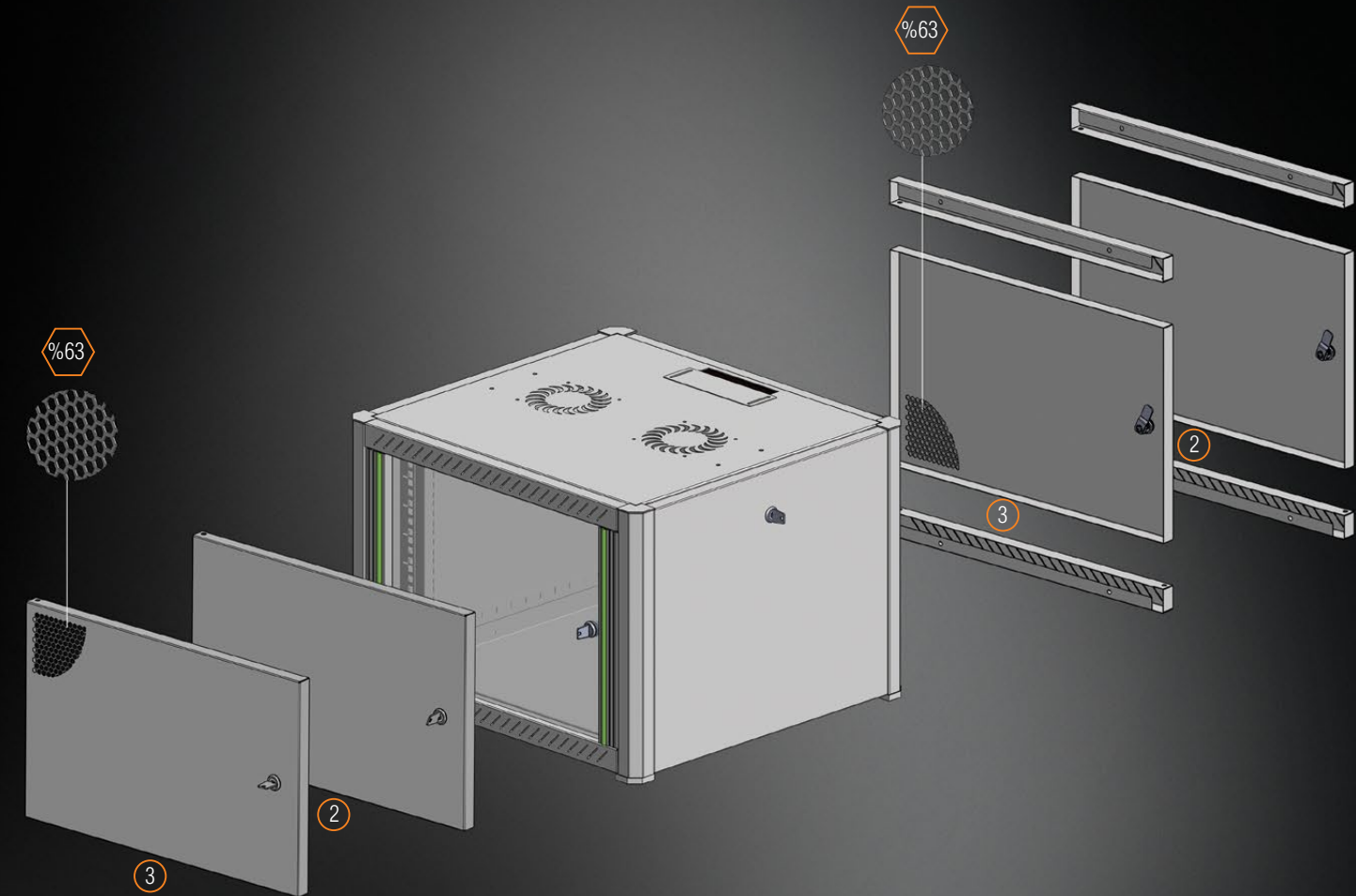
WIDTH W: 600mm
DEPTH D: 560mm



ISOMETRIC VIEW

DOOR OPTIONS

WIDTH W: 600mm
DEPTH D: 560mm



WT SERIES NETWORK WALL TYPE CABINETS W=600mm D=560mm

| Product Code | Product Description | U Measurement (U) | Product Dimensions WxDxH (mm) | Width Between Rails (mm) | Ah Wall Mounting Hole Gaps (mm) | h Measurement (mm) | Package Dimensions WxDxH (mm) | Number in the Package (pcs) | Product Net Weight (kg) | Product Gross Weight (kg) | Number on Pallet (pcs) | Pallet Dimensions WxDxH (mm) | Pallet Weight (kg) | DEPTH: Between rail and rear panel (mm) |
|----------------|---------------------------------------|-------------------|-------------------------------|--------------------------|---------------------------------|--------------------|-------------------------------|-----------------------------|-------------------------|---------------------------|------------------------|------------------------------|--------------------|---|
| MR.WTN07U56.XX | 7U W=600mm D=560mm Wall Type NETWORK | 7U | 600x560x423 | 19" | 276 | 343 | 620x580x450 | 1 | 19,5 | 20,5 | 20 | 1200x1300x2400 | 436 | 455 |
| MR.WTN09U56.XX | 9U W=600mm D=560mm Wall Type NETWORK | 9U | 600x560x512 | 19" | 365 | 432 | 620x580x540 | 1 | 21,6 | 22,7 | 16 | 1200x1300x2280 | 390 | 455 |
| MR.WTN12U56.XX | 12U W=600mm D=560mm Wall Type NETWORK | 12U | 600x560x645 | 19" | 498 | 565 | 620x580x670 | 1 | 25,6 | 27 | 12 | 1200x1300x2150 | 350 | 455 |
| MR.WTN16U56.XX | 16U W=600mm D=560mm Wall Type NETWORK | 16U | 600x560x823 | 19" | 676 | 743 | 620x580x850 | 1 | 30,5 | 32 | 10 | 1200x1300x2450 | 346 | 455 |
| MR.WTN20U56.XX | 20U W=600mm D=560mm Wall Type NETWORK | 20U | 600x560x1000 | 19" | 856 | 920 | 620x580x1030 | 1 | 35,5 | 37 | 8 | 1200x1300x2250 | 322 | 455 |

XX= Color Code, 02 means Light Grey RAL 7035 and 01 means Black RAL 9005, the code is added by the customer at the order. When one of the door options is selected, it should be informed at the order with its selected surface. The standard door options: Front Door=1 (Glass Door), Rear Door=1 (Bracket Type Door).

DOUBLE SECTION FOR WT **N** WALL TYPE CABINETS

WIDTH W: 600mm

DEPTH D: 150mm



Double Section modules are adaptable to all Network Series Wall Type Cabinets.



ADDITIONAL CAPACITY

Additional depth capacity of 150mm provided by the Network Series Wall Type Cabinets allows housing of cable harness.

Equipments, conforming with 19" installation and of 70 mm depth, may be attached inside.

MULTI DIRECTIONAL CABLE INLET

By means of 2 brushed cable entry modules of W=145mm x D=70mm found on the top and bottom, and 1 cable inlet hole of W=145mm x D=70mm found at the back, it allows multi directional cable inlet.

COLOR OPTIONS



RAL 7035 LIGHT GREY

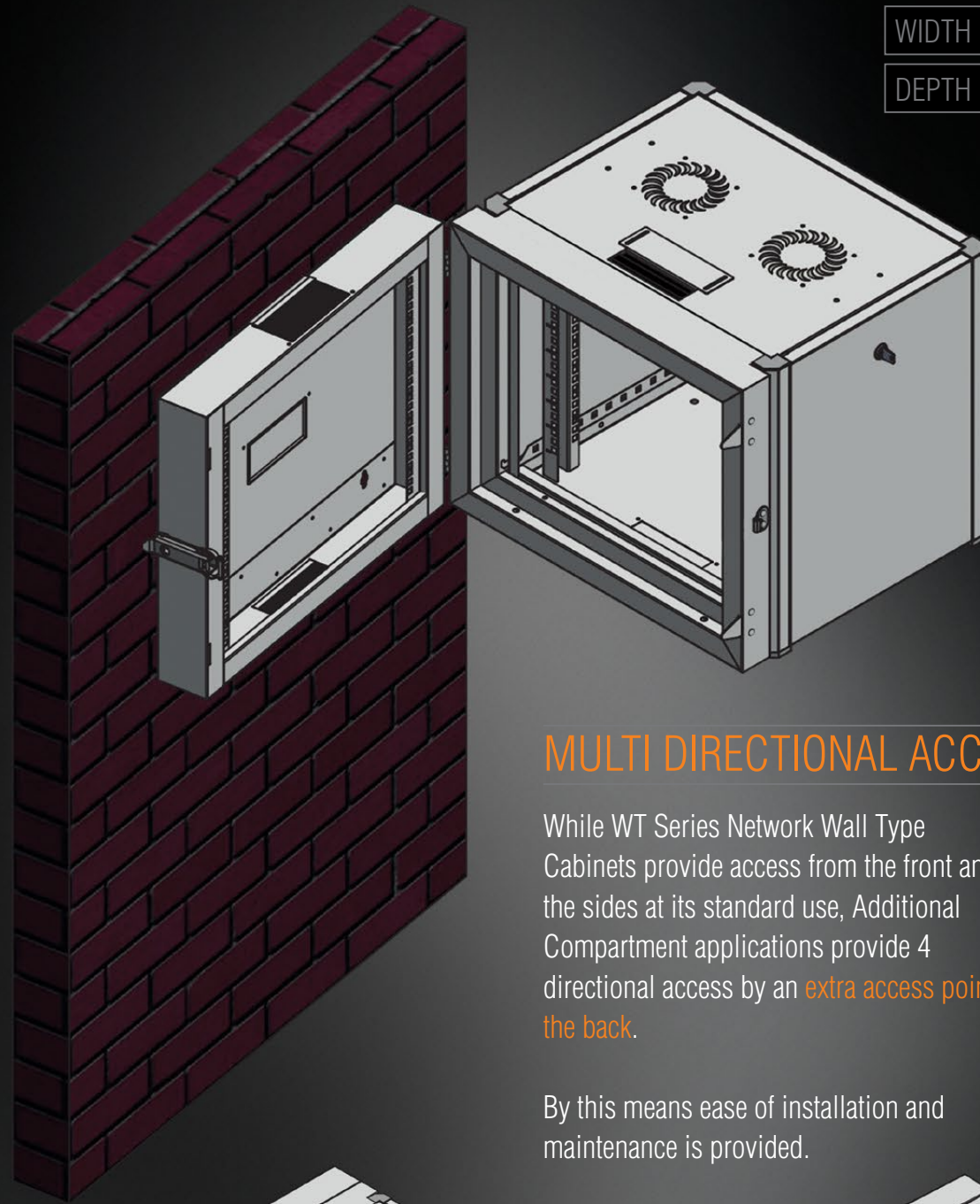


RAL 9005 BLACK

LOADING CAPACITY: 80kg

WIDTH W: 600mm

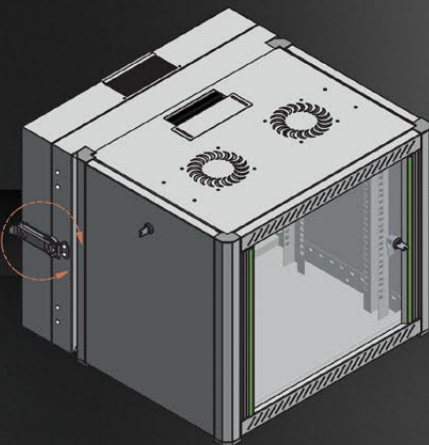
DEPTH D: 150mm



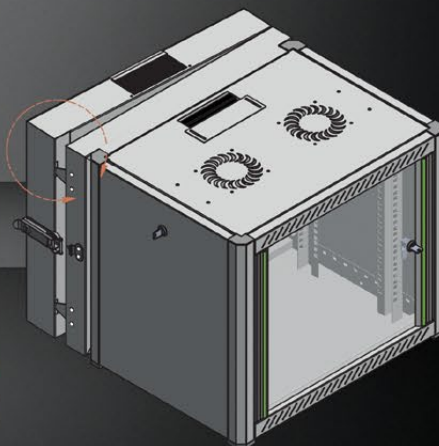
MULTI DIRECTIONAL ACCESS

While WT Series Network Wall Type Cabinets provide access from the front and the sides at its standard use, Additional Compartment applications provide 4 directional access by an **extra access point at the back**.

By this means ease of installation and maintenance is provided.



By means of its special brace lock system it presents heavy duty locking mechanism.

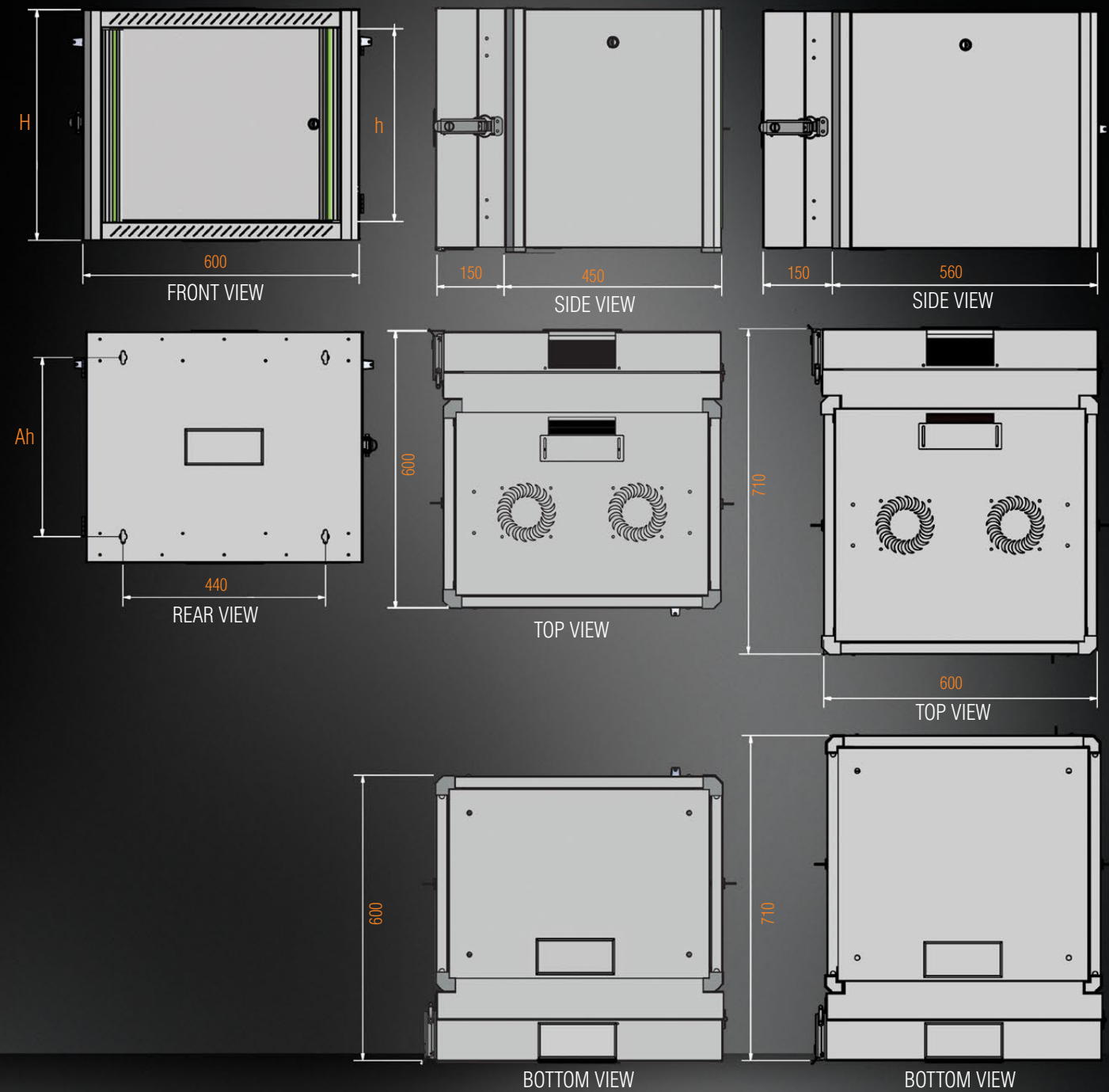


Thanks to its balancing lugs, cabinet is stabilized while closing.

CONSTRUCTION DRAWINGS

WIDTH W: 600mm

DEPTH D: 150mm



DOUBLE SECTION FOR WT SERIES NETWORK WALL TYPE CABINETS W=600mm D=150mm

| Product Code | Product Description | h Measurement (U) | Product Dimensions WxDxH (mm) | Width Between Rails | Ah Wall Mounting Hole Gaps (mm) | h Measurement (mm) | Package Dimensions WxDxH (mm) | Number in the Package (pcs) | Product Net Weight (kg) | Product Gross Weight (kg) | DEPTH: Between rail and rear panel (mm) |
|--------------|------------------------------------|-------------------|-------------------------------|---------------------|---------------------------------|--------------------|-------------------------------|-----------------------------|-------------------------|---------------------------|---|
| MR.EKG07UXX | 7U W=600mm D=150mm DOUBLE SECTION | 7U | 600x150x409 | 19" | 300 | 329 | 655x200x435 | 1 | 12,7 | 13,3 | 70 |
| MR.EKG09UXX | 9U W=600mm D=150mm DOUBLE SECTION | 9U | 600x150x498 | 19" | 389 | 418 | 655x200x525 | 1 | 14 | 15 | 70 |
| MR.EKG12UXX | 12U W=600mm D=150mm DOUBLE SECTION | 12U | 600x150x631 | 19" | 522 | 551 | 655x200x655 | 1 | 16 | 17 | 70 |
| MR.EKG16UXX | 16U W=600mm D=150mm DOUBLE SECTION | 16U | 600x150x809 | 19" | 700 | 729 | 655x200x835 | 1 | 19 | 21 | 70 |
| MR.EKG20UXX | 20U W=600mm D=150mm DOUBLE SECTION | 20U | 600x150x986 | 19" | 878 | 906 | 655x200x1015 | 1 | 22 | 25 | 70 |

XX= Color Code, 02 means Light Grey RAL 7035 and 01 means Black RAL 9005, the code is added by the customer at the order.